



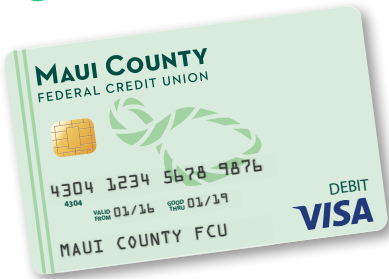
THE BEACON

The Newsletter for Members of the Maui County Federal Credit Union



NEW EMV DEBIT CARDS *Coming Soon!*

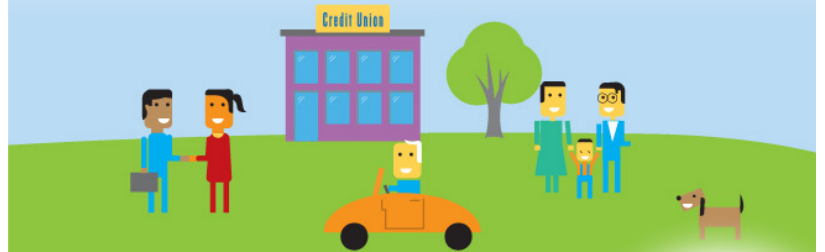
In an effort to enhance security and help protect member information, MCFCU debit cards will now feature built-in chip technology. This new technology, which has already been in use in Europe, Asia and Canada, has proven to be a major fraud deterrent. By generating an encrypted, one-time use code for every chip purchase you make, your new card will help reduce in-store fraud by making it more difficult for counterfeiters to steal your card's information.



All new MCFCU debit cards will feature this new technology, and current cardholders will begin receiving replacement chip cards throughout the next 12 months. If you have any questions about your new chip card, please contact a member service representative at 808-244-7968.

INTERNATIONAL CREDIT UNION DAY

Thursday, October 20, 2016
Daily Giveaways*



International Credit Union Day is coming up, and we want you to join us in our celebration! Stop by the Credit Union for some light refreshments on Thursday, October 20 as we celebrate the qualities that make credit unions unique and show our appreciation for our members.

*While supplies last.



SAVE THE DATE | **80th ANNUAL MEETING**
03.09.17



Featuring
Desiree with
Asian Blend



Your Pass to Travel Convenience

Through our new Preferred Affiliate program with Hawaiian Airlines, MCFCU is pleased to offer members a 5% discount on web fares to the mainland through Hawaiian Airlines!



Getting your discount is as easy as 1, 2, 3!

1. Visit www.hawaiianair.com
2. Scroll to and click on Preferred Affiliate
3. Input the Preferred Affiliate code: MCFCU

With convenient online booking and a variety of fare and itinerary options to choose from, getting your discount is easy and convenient. Visit www.hawaiianair.com to get started today.

Protect Yourself from Cybercrime

The internet, now more than ever, has become an integral part of our daily lives. From online shopping and online bill payments to social media and web surfing, the world wide web has created an unprecedented convenience for online users. Unfortunately, it has simultaneously opened the door to extraordinary potential for fraudulent activity and identity theft for consumers. So before you open your browser again, please consider these helpful tips to aid in protecting your personal and financial information from potential cybercrime or identity theft.

- **Make passwords long and strong.** Use a combination of lowercase and uppercase letters as well as special characters and numbers.
- **Keep your accounts and passwords unique.** Avoid using the same usernames and passwords for each of your online accounts.
- **Own your online presence.** Set privacy and security settings on websites to your comfort level and limit who you share information with.
- **Secure your machine.** Ensure your security software, operating system, and web browser are up to date, and make sure your pop-up blocker is turned on.
- **Protect all your devices.** Along with computers, smartphones, gaming systems, and other web-enabled devices also need protection from malware.
- **When in doubt, throw it out.** Don't click on suspicious links or attachments in emails.
- **Review your credit report regularly.** Report any suspicious or inaccurate information immediately.

BOARD OF DIRECTOR NOMINATIONS

Board of Directors Chairman Edwin Okubo appointed the following to the Nominating Committee for the 2017 Board of Directors election: Frederico Asuncion, Robert Kawahara and Edwin Okubo. The Nominating Committee submits the following names for nomination to the Board of Directors for the 2017 Annual Meeting election (4 to be elected): Richelle K. Lu, Glenn Okimoto, Karen Oura and Clifford Zane.

Other interested members may submit their nominations by petitions signed by 1% of the members with a minimum of 20 and a maximum of 500. Petition and biographical data forms are available at the Credit Union office. The election will not be conducted by ballot and there will be no nominations from the floor when there is only one nominee for each position to be filled. Deadline to submit nominations will be November 15, 2016, at the close of business.

- » **Karen T. Oura** has been a member of Maui County Federal Credit Union for 33 years. She is a graduate of Lahainaluna High School. She attended the University of Iowa Methodist School of Nursing and holds a Bachelor of Arts degree from the University of Hawaii at Manoa. Prior to her retirement a few years ago, Karen served as Maui Memorial Medical Center's Chief Clinical Executive. Karen recognizes the value of teamwork and enjoys working with people. She wants to contribute to the community and the members of the Credit Union by serving as a volunteer to represent their interests.
- » **Clifford K.S. Zane** has been a member of Maui County Federal Credit Union for more than 35 years. He graduated from the University of Hawaii with a degree in accounting. While attending college, he was employed by a CPA firm and traveled to Japan and Korea auditing army installations. Clifford retired several years ago from his position as Revenue Agent for the IRS. Clifford is currently

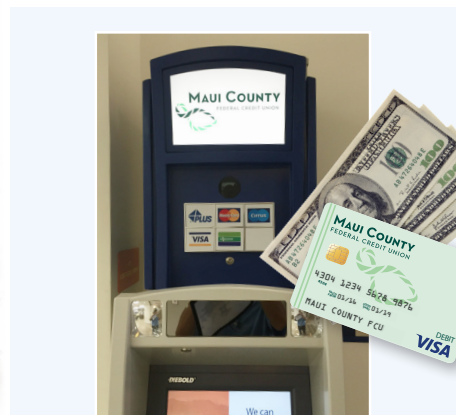
on the Board of Directors and an Asset Liability Management Committee member. Clifford explains that he is running for re-election on the Board because he has enjoyed the stewardship role of a board member and wants to contribute to the continued growth and profitability of our Credit Union. He says, "I have enjoyed initiating and pursuing new products for our members such as Scholarships and Supplemental Loans for Education, and most recently, First Time Home Ownership Program for our members."

- » **Richelle Kawasaki Lu** has been a member of MCFCU for 30 years. Born in Hilo and raised on Maui, Richelle is a Maui High School graduate who received her Bachelor's degree from UH Manoa as well as her law degree from the William S. Richardson School of Law. Richelle currently works for the Hawaii Health Systems Corporation and is an Assistant Hospital Administrator and the Chief of Organizational Development for the Maui Region, which includes Maui Memorial Medical Center, Kula Hospital, and Lanai Community Hospital. In her spare time, Richelle enjoys spending time with her husband and three children. Richelle would like to serve as a member of the MCFCU Board because MCFCU is such an important, trusted part of our community. As a long time member, she is interested in making sure MCFCU continues to provide the excellent services it is known to offer in the same friendly, warm manner people have come to appreciate and expect.
- » **Glenn Okimoto** has been a member of Maui County Federal Credit Union for more than 50 years. He graduated from the University of Hawaii with a Bachelor's degree in Business Administration. Glenn has worked as a bookkeeper, Office Audit Supervisor, Auditor, and most recently as Labor Programs Field Manager with the State of Hawaii Department of Labor and Industrial Relations. He has been a member of the MCFCU Supervisory Committee for 4 1/2 years, and served as the committee's Chairman for 3 years. Glenn wants to help MCFCU members by using his skills and experience to help plan, direct, and implement operational functions and future growth.



MEMBER SHRED DAY

MCFCU's Member Shred Day was a great success! Members brought their outdated sensitive documents for safe disposal to the Wailuku Branch on June 25th.



NEW ATM

up and running at University of Hawaii Maui College! Located on the first floor of the Paina Building.

Important IRA Information

Action Requested to Avoid Possible IRS Penalties: Traditional IRA owners have Required Minimum Distributions (RMD). If you have not already setup your RMD payment plan, or if you would like to make changes to your distribution, please contact the Credit Union at 808.244.7968.

Withholding Notice: Payments from your IRA are subject to federal income tax withholding, unless you elect no withholding. You may change your withholding election at any time prior to your receipt of a payment. To change your withholding election, complete the appropriate form provided by Maui County Federal Credit Union.

Withholding from IRA payments, when combined with other withholding, MAY relieve you from payment of estimated income taxes. However, your withholding election does not affect the amount of income tax you pay. You may incur penalties under the estimated tax rules if your withholding and estimated tax payments are insufficient.

Maui County Federal Credit Union would like to congratulate the recipients of our 2016 Scholarship Awards!

TAYLOR K. AWAI

University of Hawaii, Maui College

MAIKA'IKE L.M. ENGLISH

University of Hawaii, Hilo

JAMES J. KAHALEKAI JR.

San Francisco Art Institute

KAYANA K. KAMOKU

Grand Canyon University

JULIA K. KINOSHITA

San Diego State University

KEHAULANI M. MACADANGDANG

Clackamas Junior College

KRISTI K. KOBASHIGAWA

University of Hawaii, Hilo

KYLIE A. TAKETA

University of Nevada, Reno

KIYOZO H. VAITUULALA

University of Hawaii, Maui College

DAYNA H. YOSHIMURA

University of Portland



Loan Rates

Effective September 1, 2016
*APR = Annual Percentage Rate

AUTO LOANS

New and Used Autos as low as.....2.90% APR*
*The rate stated is based on an evaluation of applicant credit, income, auto payment and collateral.

PERSONAL LOANS

As low as.....4.75% APR*
*The rate stated is based on an evaluation of applicant credit, income, and auto payment.

HOME EQUITY LOANS

As low as.....4.00% APR*
*The rate stated is based on credit history, income, loan to value ratio, financial condition of applicant, and condition of collateral.

REAL ESTATE LOANS

A wide variety of Mortgage Solutions
For current rates see our website or call 244-7968 option 6.

SHARE SECURED LOANS

As low as.....2.00% APR*

CONSOLIDATION LOANS

As low as.....4.75% APR*
*The rate stated is based on an evaluation of applicant credit, income, and auto payment.

All rates are as of 9/1/16 and are expressed as Annual Percentage Rates (APR). Loans are subject to credit approval and rates, terms and conditions are subject to change without notice.

Dividend Yields

APY = Annual Percentage Yield

Regular Share Account.....0.20% APY
Christmas Club Account*0.20% APY
IRA Share Account

Traditional, ROTH, & Coverdell ESA

Call for current rates

Share Draft Account.....0.10% APY
Share Certificates

6-, 12-, 24-, 36-, 48-

and **60-Month** terms

Call for current rates

Annual Percentage Yields (APY) shown are accurate as of 9/1/16. The rates may change after the accounts are opened. Fees could reduce earnings on the accounts. Minimum opening deposit is \$5.00 for Regular Share, Christmas Club and IRA Share Accounts. Minimum opening deposit for Share Draft Accounts is \$50.00. Minimum balance to earn the APY is \$100.00 for Regular Share and Share Draft Accounts. Dividends are accrued monthly and credited to your account on the last day of each month.

For term share certificates, a penalty will or may be imposed for early withdrawal. Maintenance or activity fees could reduce the earnings on the account.

*Dividends for Christmas Club Accounts are credited to your account annually on 10/31.

MAIN OFFICE
 1888 Wili Pa Loop
 Wailuku, HI 96793-1272
 (808) 244-7968 • Fax (808) 242-1690
 Monday - Friday 8:30 a.m. - 4:30 p.m.

KAHULUI BRANCH (MAUI MARKETPLACE)
 270 Dairy Road, Suite 146
 Kahului, HI 96732
 (808) 446-8698
 Monday - Friday 9:00 a.m. - 5:00 p.m.
 Saturday 8:30 a.m. - 12:30 p.m.

Neighbor Islands (800) 783-6597
 Teller Tone Service (800) 285-2932
 WWW.MAUICOUNTYFCU.ORG

BOARD OF DIRECTORS

- Edwin Okubo, Chairman
- Clifford Zane, Vice Chairman
- Karen T. Oura, Secretary/Treasurer
- Frederico Asuncion, Director
- Robert S. Kawahara, Director
- Richelle Lu, Director
- Glenn Okimoto, Director

SUPERVISORY COMMITTEE

- Ralph N. Nagamine
- Glenn Okimoto
- Greg Takahashi
- Robin Tanaka
- Wesley Yoshioka

**PLEASE CALL THE CREDIT UNION AT
 244-7968 OR (800) 783-6597 FOR
 CURRENT RATE INFORMATION OR IF
 YOU HAVE QUESTIONS**

Staff News

*Employee of
 the Quarter*

*Congratulations to Ashley Quicho,
 who was recently named the MCFCU
 employee of the quarter!*



ASHLEY QUICHO

Promotions

*Congratulations to the following
 employees on their recent promotions!*

- MYRA SAKAI**
Branch Manager, Wailuku Branch
- DESIREE TODA**
Branch Manager, Kahului Branch
- NICKLAUS TANAKA**
Operations Manager, Kahului Branch
- ALIA ARCANGEL**
Operations Manager, Wailuku Branch
- KIMBERLY LLANES**
Member Service Representative III
- CHARLESY-AL BENZ**
Member Service Representative II
- JENNIFER SIVERLY**
Financial Service Representative

Holiday Closings

COLUMBUS DAY
 Monday, October 10

ELECTION DAY
 Tuesday, November 8
Wailuku Branch- Close at 2:30pm
Kahului Branch- Close at 3:00pm

VETERANS' DAY
 Friday, November 11

THANKSGIVING
 Thursday, November 24

CHRISTMAS EVE
 Saturday, December 24
Wailuku & Kahului Branch Closed

CHRISTMAS (Observed)
 Monday, December 26

NEW YEAR'S EVE
 Saturday, December 31
Wailuku & Kahului Branch Closed

NEW YEAR'S DAY (Observed)
 Monday, January 2, 2017

MCFCU CHECK-UP

*Please note that the Total Shares listed
 in the July 2016 edition of The Beacon
 newsletter should have read 229,249,767
 rather than 222,249,767.*

	August '16	August '15	Difference	% Change
Members	15,119	14,620	499	3.41%
Total Shares	\$230,520,241	\$222,546,980	\$7,973,261	3.58%
Total Loans	\$136,505,666	\$132,172,315	\$4,333,351	3.28%
Total Assets	\$268,580,032	\$257,873,333	\$10,706,699	4.15%



AMERICA'S
CREDIT UNIONS
Where people are worth more than money.™

