



# THE BEACON

*The Newsletter for Members of the Maui County Federal Credit Union*



## HARVEST THE *Savings*



Save time and money by financing your next vehicle with Maui County Federal Credit Union! With low, competitive rates, flexible terms and a convenient online application, we make it quick and easy to get behind the wheel of your dream car, truck or SUV.

Apply online at [www.maui-county-fcu.org](http://www.maui-county-fcu.org) or stop by the Credit Union and we'll be happy to assist you in person.

## INTERNATIONAL CREDIT UNION DAY *Thursday, October 18, 2018*

For nearly two centuries, financial cooperatives have encouraged people of every race, gender and belief to come together and give their all towards the betterment of their communities. It's about people helping people - and that's why credit unions always offer a platinum lining.



This year, we're celebrating International Credit Union Day's platinum anniversary and looking forward to the opportunity to look back after 70 years and be thankful for the lives and communities that have been improved by the unique principles and actions of our movement.

We hope you will join us **OCTOBER 15-19** as we celebrate International Credit Union Day with **free popcorn and hotdogs for our members from 11:00am-3:00pm**. Plus, when you participate in a brief member survey, we'll donate \$1 to the charity with the most member votes! We look forward to seeing you and celebrating ICU Day with you.

## Food Drive

MCFCU will be having a Food Drive from **October 1st - October 31st!**



## Disaster Relief Loan

If you were affected by Hurricane Lane or the fires in the Lahaina Area, MCFCU is here to help. Our disaster relief loan programs feature low interest rates, payment deferrals and Skip-A-Pay options to help you get the funds you need to get life more back to normal. We extend our well wishes through these troubling times and invite you to contact us for more information about our disaster relief loan options today.

## Reimagine What Your Home Can Be!

If you have plans to renovate your home, make a major purchase, pay for college or consolidate your debt, a Home Equity Loan from Maui County FCU may be just what you need. With our Home Equity Line of Credit (HELOC) or fixed-rate Home Equity Loan, you can turn your home's equity into cash for all your needs, wants and dreams.

**PLUS, receive a free Amazon Echo with a minimum loan amount of \$25,000!**

Stop by the Credit Union for current rates, details and application information.



Maui County Federal Credit Union  
would like to congratulate the 10 recipients of our \$1,000  
**2018 Scholarship Awards!**



**IVORY  
AWAI-PASCUAL**



**KAMRAN  
BHATTACHARYA**



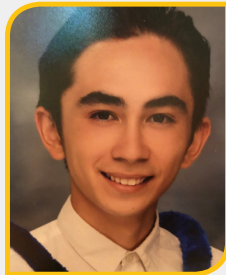
**TEVA  
ELDRIDGE**



**ALYSSA  
FUSATO**



**GAILA  
GALANO**



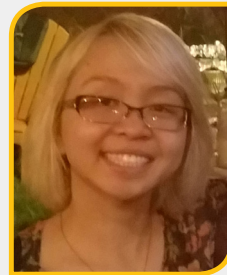
**KALANI  
GREGORY**



**THOMAS  
HAYASHI**



**IAN  
MARTINS**



**JULIE  
NGUYEN**



**BRAIDEN  
PAA**

**Lahainaluna  
High School  
SCHOLARSHIP  
WINNERS!**



Six \$1,000 Maui County Federal Credit Union Scholarships were awarded. (L to R) Gary Fukuroku-President/CEO, Rowel Angasay, Shirlene Companero, Jerico Olpindo, Liliola Vehikite, Kainalu Estrella, Emi-Lei Sodetani-Cabanilla-Lahaina Branch Manager.

**Lahaina Party  
Grand Prize Winners!**



Left to Right

**Janet Lendio, Nicole Malacas, Pamela Silva**

**IMPORTANT IRA INFORMATION**

**Action Requested to Avoid Possible IRS Penalties** Traditional IRA owners have Required Minimum Distributions (RMD). If you have not already setup your RMD payment plan, or if you would like to make changes to your distribution, please contact the Credit Union at 808.244.7968. **WITHHOLDING NOTICE** Payments from your IRA are subject to federal income tax withholding, unless you elect no withholding. You may change your withholding election at any time prior to your receipt of a payment. To change your withholding election, complete the appropriate form provided by Maui County Federal Credit Union. Withholding from IRA payments, when combined with other withholding, MAY relieve you from payment of estimated income taxes. However, your withholding election does not affect the amount of income tax you pay. You may incur penalties under the estimated tax rules if your withholding and estimated tax payments are insufficient.



**Maui County  
FCU offers  
BANKING AT YOUR  
FINGERTIPS**

Your credit union offers a suite of electronic banking tools that include Home Banking, Mobile Banking, E-Statements, Card Valet, and Credit Sense. Each is designed to keep you conveniently connected to your financial institution.

**EMBRACE DIGITAL TODAY!**

**SAVE THE DATES**

**83rd Annual Meeting 02-28-2019 (Thursday)  
& Our Lahaina Dinner 04-27-2019 (Saturday)**

**HOLIDAY CLOSINGS**

- COLUMBUS DAY** Monday, October 8
- VETERANS DAY** Monday, November 12
- THANKSGIVING**  
Thursday, November 22
- CHRISTMAS** Tuesday, December 25
- NEW YEAR'S DAY**  
Tuesday, January 1, 2019

**Board of Directors Nominations:**

Board of Directors Chairman Edwin Okubo appointed the following to the Nominating Committee for the 2019 Board of Directors election: Frederico Asuncion, Robert Kawahara and Edwin Okubo. The Nominating Committee submits the following names for nomination to the Board of Directors for the 2019 Annual Meeting election (4 to be elected): Richelle K. Lu, Glenn Okimoto, Karen Oura and Clifford Zane. Other interested members may submit their nominations by petitions signed by 1% of the members with a minimum of 20 and a maximum of 500. Petition and biographical data forms are available at the Credit Union office. The election will not be conducted by ballot and there will be no nominations from the floor when there is only one nominee for each position to be filled. Deadline to submit nominations will be November 15, 2018, at the close of business.

» **Karen T. Oura** has been a member of Maui County Federal Credit Union for 35 years. She is a graduate of Lahainaluna High School. She attended the University of Iowa Methodist School of Nursing and holds a Bachelor of Arts degree from the University of Hawaii at Manoa. Prior to her retirement a few years ago, Karen served as Maui Memorial Medical Center's Chief Clinical Executive. Karen recognizes the value of teamwork and enjoys working with people. She wants to contribute to the community and the members of the Credit Union by serving as a volunteer to represent their interests.

» **Clifford K.S. Zane** has been a member of Maui County Federal Credit Union for more than 37 years. He graduated from the University of Hawaii with a degree in accounting. While attending college, he was employed by a CPA firm and traveled to Japan and Korea auditing army installations. Clifford retired several years ago from his position as Revenue Agent for the IRS. Clifford is currently on the Board of Directors and an Asset Liability Management Committee member. Clifford explains that he is running for re-election on the Board because he has enjoyed the stewardship role of a board member and wants to contribute to the continued growth and profitability of our Credit Union. He says, "I have enjoyed initiating and pursuing new products for our members such as Scholarships and Supplemental Loans for Education, and most recently, First Time Home Ownership Program for our members."

» **Richelle Kawasaki Lu** has been a member of MCFCU for 30 years. Born in Hilo and raised on Maui, Richelle is a Maui High School graduate who received her Bachelor's degree from UH Manoa as well as her law degree from the William S. Richardson School of Law. Richelle currently works for the County of Maui as a Deputy Prosecuting Attorney. In her spare time, Richelle enjoys spending time with her husband and three children. Richelle would like to serve as a member of the MCFCU Board because MCFCU is such an important, trusted part of our community. As a long time member, she is interested in making sure MCFCU continues to provide the excellent services it is known to offer in the same friendly, warm manner people have come to appreciate and expect.

» **Glenn Okimoto** has been a member of Maui County Federal Credit Union for more than 50 years. He graduated from the University of Hawaii with a Bachelor's degree in Business Administration. Glenn has worked as a bookkeeper, Office Audit Supervisor, Auditor, and most recently as Labor Programs Field Manager with the State of Hawaii Department of Labor and Industrial Relations. He has been a member of the MCFCU Supervisory Committee for 4 1/2 years, and served as the committee's Chairman for 3 years. Glenn wants to help MCFCU members by using his skills and experience to help plan, direct, and implement operational functions and future growth.

**Loan Rates**

Effective September 1, 2018  
\*APR = Annual Percentage Rate

**AUTO LOANS**

New and Used Autos as low as .....2.90% APR\*  
\*The rate stated is based on an evaluation of applicant credit, income, auto payment and collateral.

**PERSONAL LOANS**

As low as .....4.75% APR\*  
\*The rate stated is based on an evaluation of applicant credit, income, and auto payment.

**HOME EQUITY LOANS**

As low as .....5.25% APR\*  
\*The rate stated is based on credit history, income, loan to value ratio, financial condition of applicant, and condition of collateral.

**REAL ESTATE LOANS**

A wide variety of Mortgage Solutions  
For current rates see our website or call 244-7968 option 6.

**SHARE SECURED LOANS**

As low as .....2.00% APR\*

**CONSOLIDATION LOANS**

As low as .....4.75% APR\*  
\*The rate stated is based on an evaluation of applicant credit, income, auto payment and collateral. Your rate may differ from our lowest rate and is determined by an evaluation of credit history, credit score, debt to income ratio, collateral, loan term, and automatic payroll deduction. Rates, terms, and conditions are subject to change without notice.  
All rates are as of 9/1/18 and are expressed as Annual Percentage Rates (APR). Loans are subject to credit approval and rates, terms and conditions are subject to change without notice.

**Dividend Yields**

APY = Annual Percentage Yield  
Regular Share Account.....0.20% APY  
Christmas Club Account\* .....0.20% APY  
IRA Share Account  
Traditional, ROTH, & Coverdell ESA  
Call for current rates  
Share Draft Account.....0.10% APY  
Share Certificates  
6-, 12-, 24-, 36-, 48-  
and **60-Month** terms  
Call for current rates

Annual Percentage Yields (APY) shown are accurate as of 9/1/18. The rates may change after the accounts are opened. Fees could reduce earnings on the accounts. Minimum opening deposit is \$5.00 for Regular Share, Christmas Club and IRA Share Accounts. Minimum opening deposit for Share Draft Accounts is \$50.00. Minimum balance to earn the APY is \$100.00 for Regular Share and Share Draft Accounts. Dividends are accrued monthly and credited to your account on the last day of each month.

For term share certificates, a penalty will or may be imposed for early withdrawal. Maintenance or activity fees could reduce the earnings on the account.

\*Dividends for Christmas Club Accounts are credited to your account annually on 11/01.

# Staff News

## Employees of the Quarter

**Jersom Buenafe    Caroline Sarmiento    Renee Saribay**

Congratulations to our Tri-Employees of the Quarter! Thank you all for working so hard to make MCFCU a truly Premier Financial Institution!

## Promotions

Congratulations to the following employees on their recent promotions!

**Jayne-Lynn Kashiwamura**  
Financial Service Representative

**Brittney Bantilan**  
Operations Support Specialist

**Kaylin Cabral**  
Member Service Representative II

**Kimberly Riglos**  
Financial Service Representative

**Diane Falces**  
Member Service Representative III

**Frances Nelson**  
Mortgage Loan Officer

**Jennifer Siverly**  
Collections Officer

**Lehua Augustin**  
Member Service Representative II

**Lynette Borden**  
Mortgage Loan Officer

## Welcome New Hires

**Laakea Bissen**  
Member Service Representative I

**Desiree Fernandez-Parilla**  
Member Service Representative I

**Caroline Csigi**  
Loan Processor

## Anniversaries

Congratulations to the following employees on their years of service!

**Jersom Buenafe**  
10 years

**Mylene Loque**  
15 years

**Kyle Iwaishi**  
15 years

## MCFCU CHECK-UP

	August '18	August '17	Difference	% Change
Members	19,038	15,580	3,458	22.20%
Total Shares	274,648,619	236,795,061	37,853,558	15.99%
Loans	141,062,863	135,542,623	5,520,240	4.07%
Assets	324,491,002	277,542,553	46,948,449	16.92%

**MAIN OFFICE**  
1888 Wili Pa Loop  
Wailuku, HI 96793-1272  
(808) 244-7968 • Fax (808) 242-1690  
Monday - Friday 8:30 a.m. - 4:30 p.m.

**KAHULUI BRANCH (MAUI MARKETPLACE)**  
270 Dairy Road, Suite 146  
Kahului, HI 96732  
(808) 446-8698

Monday - Friday 9:00 a.m. - 5:00 p.m.  
Saturday 9:00 a.m. - 1:00 p.m.

**LAHAINA BRANCH**  
270 Lahainaluna Road  
Lahaina, HI 96761  
(808) 661-4825

Monday - Friday 8:30 a.m. - 4:30 p.m.

Neighbor Islands (800) 783-6597  
Teller Tone Service (800) 285-2932  
WWW.MAUICOUNTYFCU.ORG

### BOARD OF DIRECTORS

Edwin Okubo, Chairman  
Clifford Zane, Vice Chairman  
Karen T. Oura, Secretary/Treasurer  
Frederico Asuncion, Director  
Robert S. Kawahara, Director  
Richelle Lu, Director  
Glenn Okimoto, Director

### SUPERVISORY COMMITTEE

Ralph N. Nagamine  
Greg Takahashi  
Robin Tanaka  
Wesley Yoshioka

PLEASE CALL THE CREDIT UNION AT  
244-7968 OR (800) 783-6597 FOR  
CURRENT RATE INFORMATION OR IF  
YOU HAVE QUESTIONS



AMERICA'S  
CREDIT UNIONS™  
Where people are worth more than money.™

